

Viking Longships

By

Hank Schrader

Viking River Cruise Specialist

Outside View of the Modi Entrance, Lounge & Restaurant



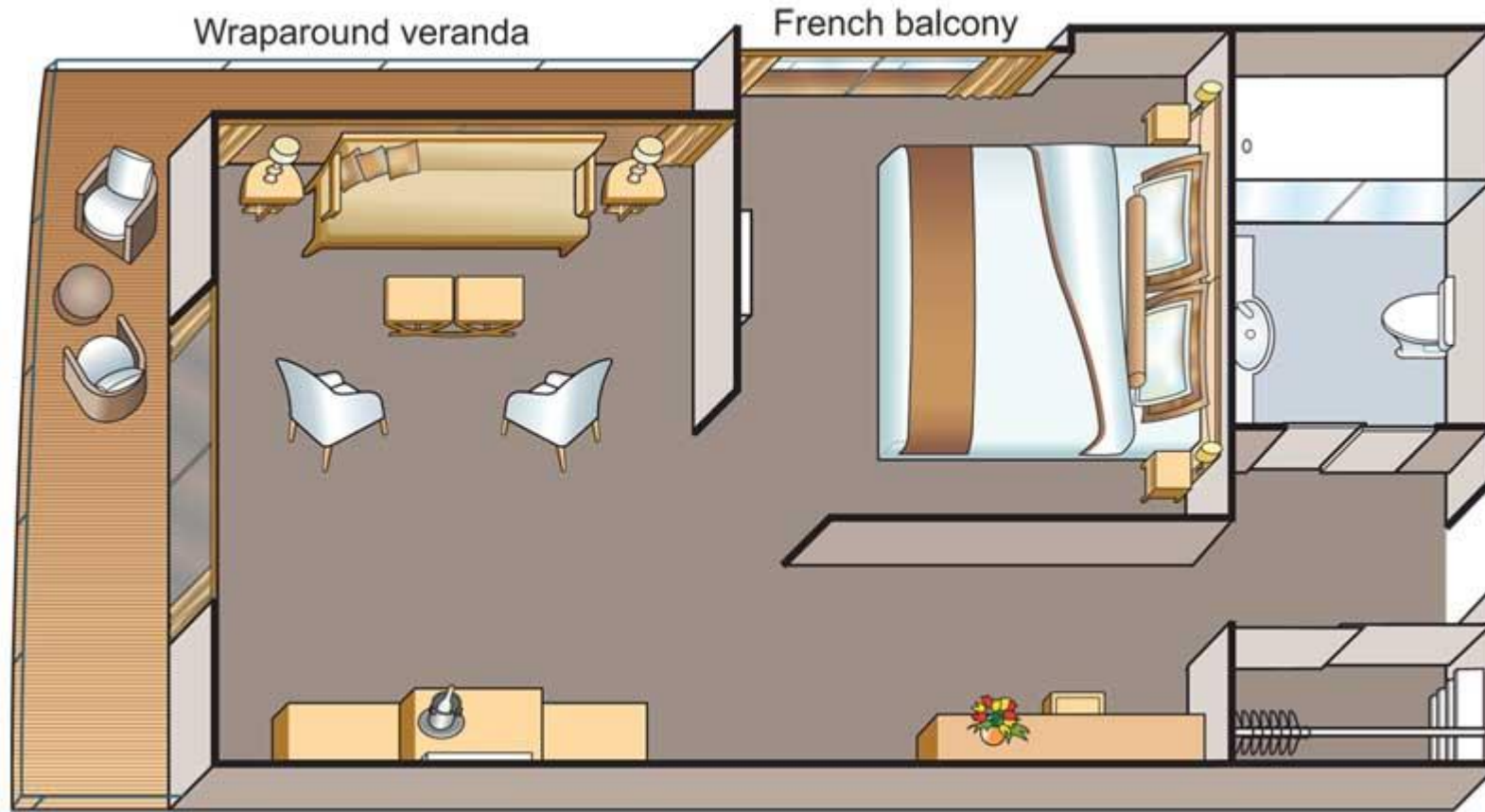
Photo Anne Schrader www.dreamdestinations.com

Stateroom Ship Facts

- Viking uses a patented off-center deck on their upper two decks.
- This allows for one side of the ship to have verandas (outside balconies) and the opposite side has French balconies.
- There are 2 large suites (445 sq ft) at the aft end of the ship that have wrap around balconies and 7 veranda suites (225 sq ft) with an outside balcony and a French balcony.
- 39 state rooms (205 sq ft) have outside verandas.
- 22 staterooms (135 sq ft) have French balconies.
- 25 staterooms are fixed windows on the first deck.
- 70 of the 95 staterooms have balconies. The outside balconies have 2 mesh chairs and a small drink table.

2 Explorer Suites 445 square feet

Diagram from Viking River Cruises



Explorer Suite with French Balcony

Photo Anne Schrader
www.dreamdestinations.com



Sitting Area Explorer Suite



Photo Anne Schrader
www.dreamdestinations.com

Explorer Suite Outside Balcony



Photo Anne Schrader
www.dreamdestinations.com

7 veranda suites (225 sq ft) with an outside balcony and a French balcony.

Ship Diagram from Viking River Cruises



Veranda Suite Bedroom



Photo Anne Schrader
www.dreamdestinations.com

Veranda
Suite
Outside
Balcony



Photo Anne Schrader
www.dreamdestinations.com

Veranda Suite Bathroom



Photo Anne Schrader
www.dreamdestinations.com

39 state rooms (205 sq ft) have outside verandas

Diagram from Viking River Cruises



Outside View of Balcony Staterooms Bottom Deck is Fixed Window Staterooms



Photo Anne Schrader www.dreamdestinations.com

Veranda Stateroom 205 sq feet

Photo from Viking River Cruise



22 staterooms (135 sq ft) have French balconies

Diagram from Viking River Cruise



French
Balcony
Stateroom
135 square
feet



Photo Anne Schrader
www.dreamdestinations.com

French
Balcony
Stateroom
135 square
feet



Photo Anne Schrader
www.dreamdestinations.com

25 staterooms are fixed windows on the first deck.

Diagram from Viking River Cruise



25 Fixed Window Stateroom 150 sq feet

Photo Viking River Cruises



Ship Facilities

- Aquavit Terrace
- Lounge
- Main Restaurant
- Reception and Shop Area
- Library and Internet Area
- Sun Deck

Outside
View of
the
Aquavit
Terrace
In Cologne



Photo Anne Schrader www.dreamdestinations.com

The Aquavit
Terrace is an
open-air
viewing area
and al fresco
restaurant



Photo Anne Schrader
www.dreamdestinations.com

Aquavit Terrace



Photo Anne Schrader
www.dreamdestinations.com

Stairway to Lounge



Photo Anne Schrader www.dreamdestinations.com

Lounge



Bar Area in the Lounge

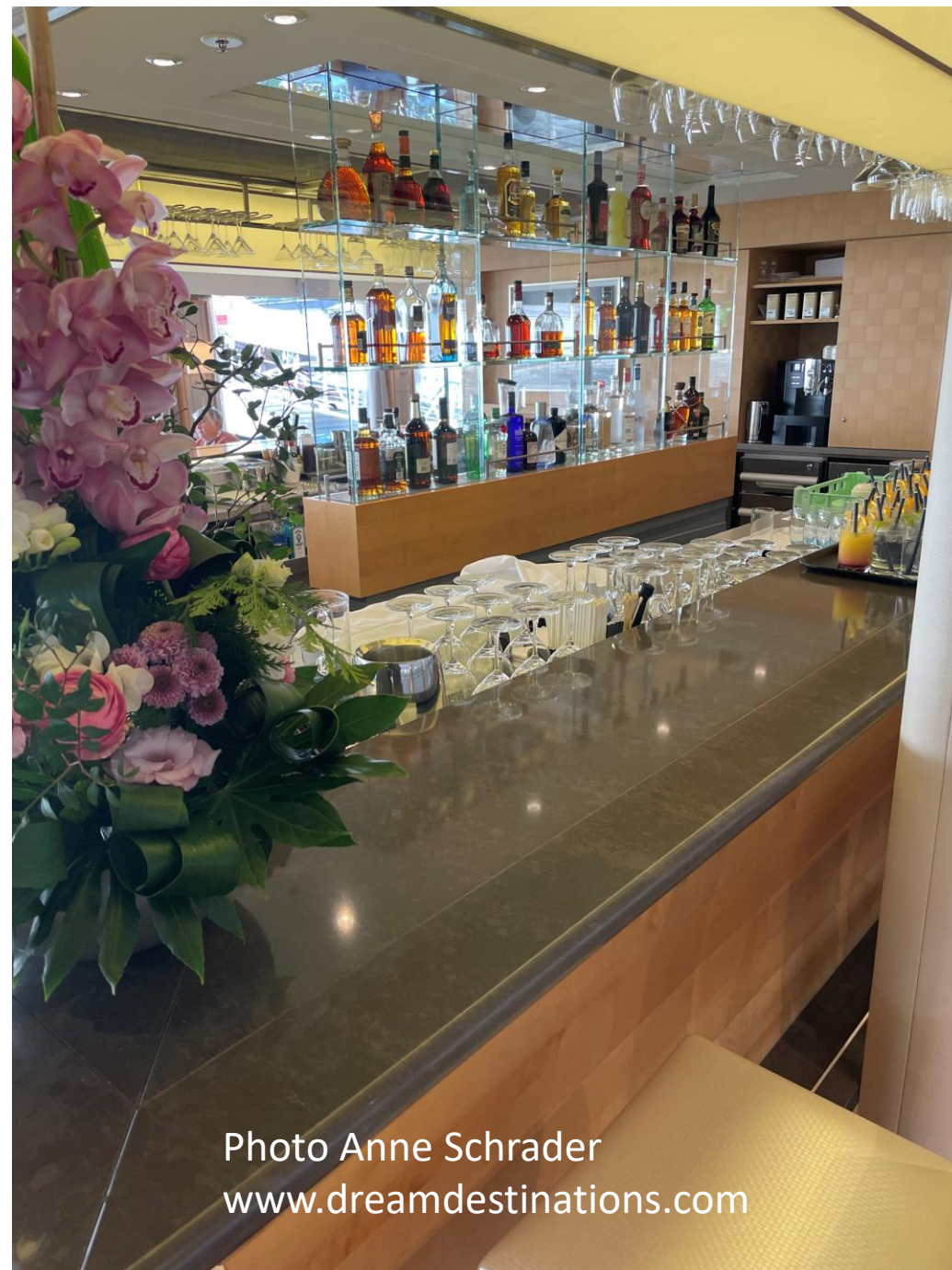


Photo Anne Schrader
www.dreamdestinations.com

Main Restaurant



Photo Anne Schrader www.dreamdestinations.com

Cooking Station Main Restaurant



Photo Anne Schrader
www.dreamdestinations.com

Reception



Photo Anne Schrader www.dreamdestinations.com

Shop



Photo Anne Schrader www.dreamdestinations.com

The Sun Deck has shaded seating areas, an organic herb garden, solar panels and a walking track



Photo Anne Schrader
www.dreamdestinations.com

The Aft Portion of the Sun Deck



Photo Anne Schrader www.dreamdestinations.com

Visit Dream Destinations

Your Journey Begins Here!

Dream Destinations



*Savor life . . . make memories . . .
visit Dream Destinations!*

Your journey begins here!

- **We want to be your travel consultants!**
- **Please contact us at:**
- aschrader@dreamdestinations.com or
- hschrader@dreamdestinations.com or
- Call us at:
- 832-244-0215 (Anne cell); 713-397-0188 (Hank Cell)
- Or visit at www.dreamdestinations.com
- www.pinterest.com/visitdd or
- www.facebook.com/visitdreamdestinations

Let Us Plan your next vacation!

Call Hank (713-397-0188) or
Anne (832-244-0215)

